

# Wired Networking Transmission

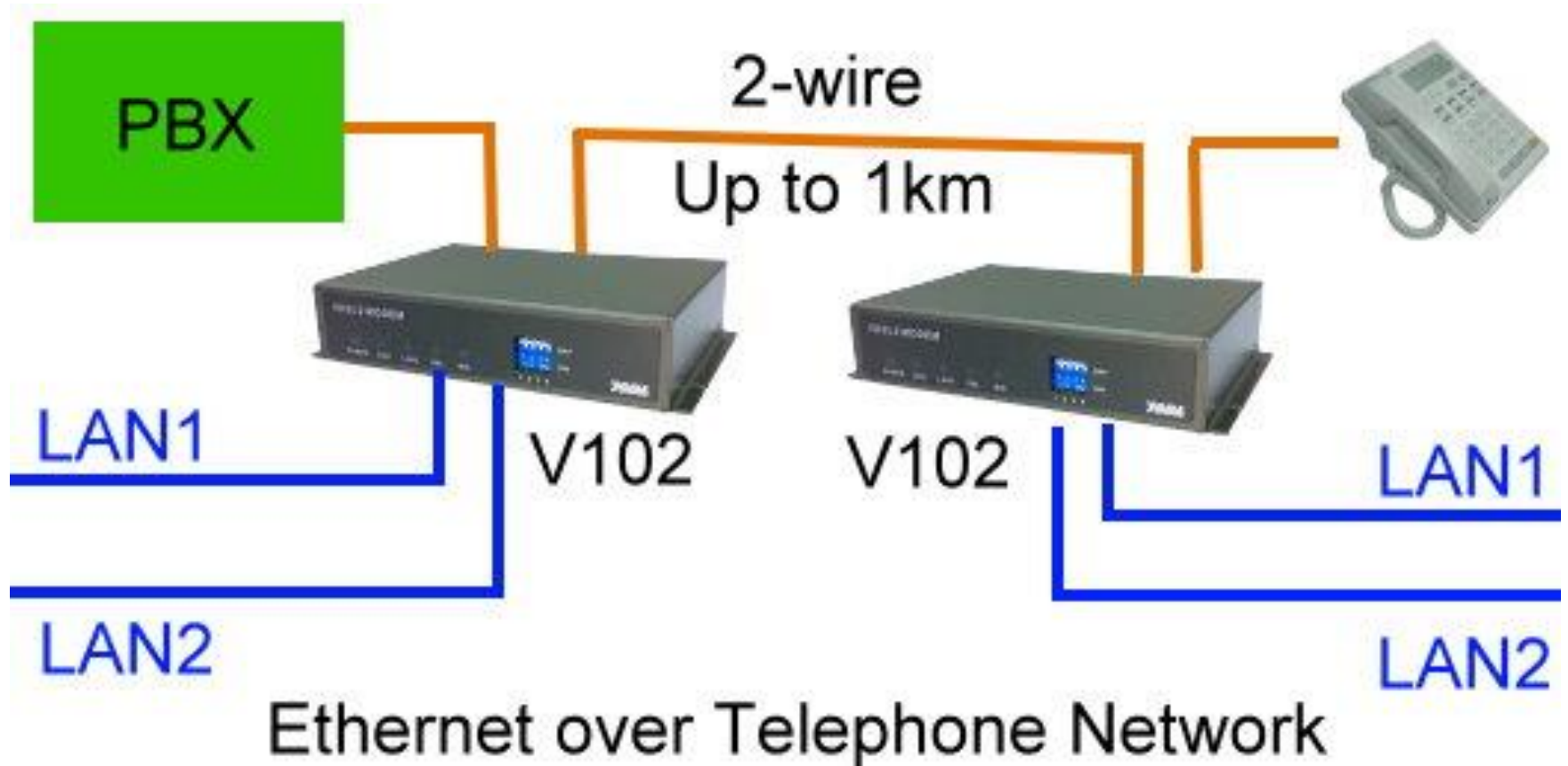
**LAN Extender over 2-wire  
Ethernet over Coax  
Optic Fiber Media Converter  
Industrial Managed Switch  
Managed Fiber Switch**

**Yoda Communications, Inc.**



# LAN Extender over 2-wire upto 1km

## ◆ Point to Point (P2P)



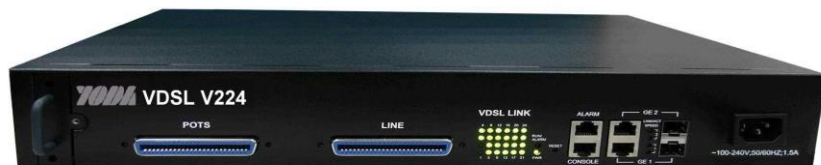
# LAN Extender over 2-wire (VDSL2) 1KM

## ◆ VDSL2 30a 100/100M

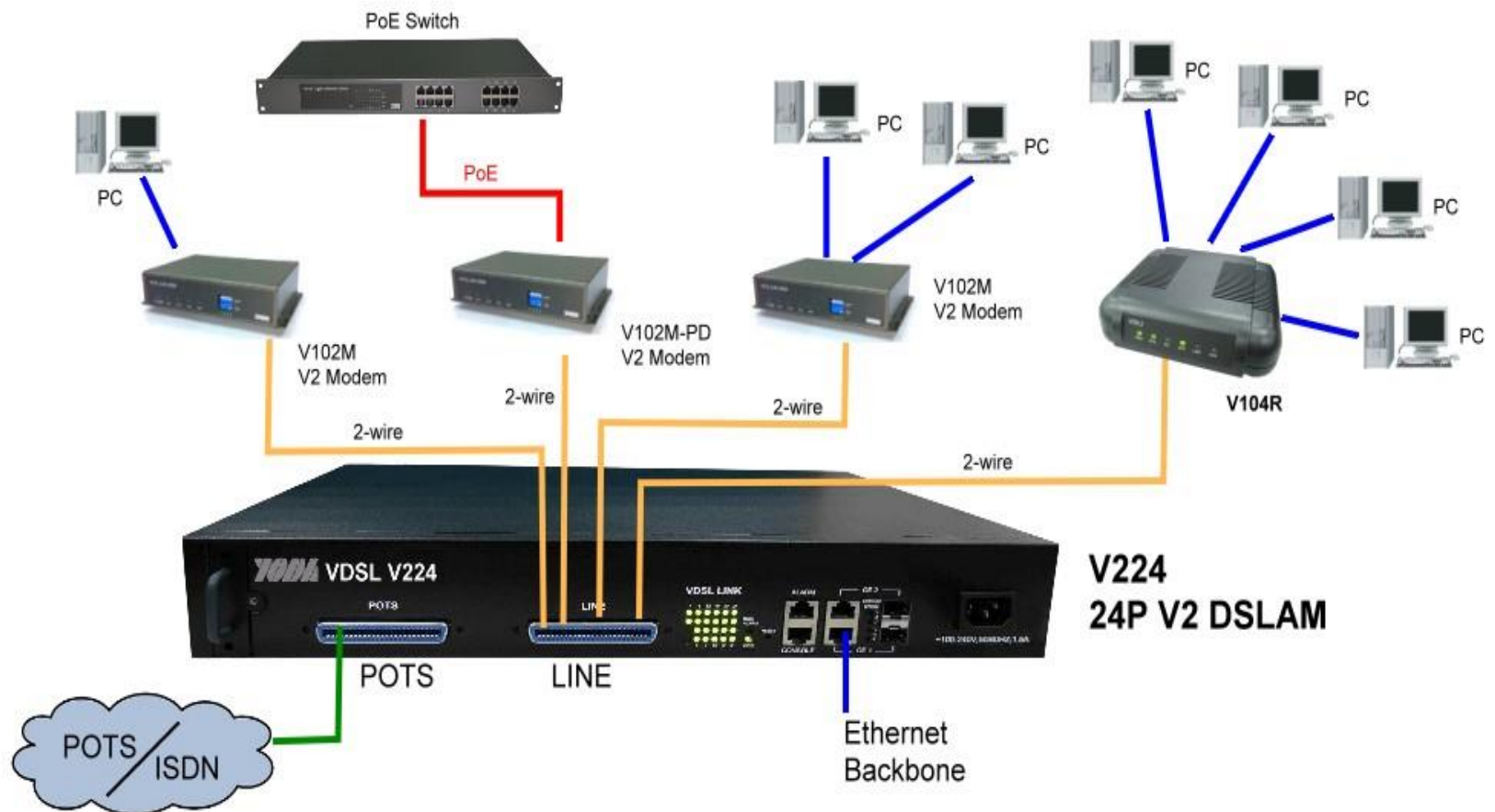
- ❖ 2-wire V2 CO-CPE : V224(24p), V208S(8p), V102M, V100M
- ❖ 2-wire P2P Kit : V102M, V100M
- ❖ 2-wire PoE Kit : V102M/V102M-PD

## ◆ VDSL2 17a 100/60M

- ❖ 2-wire P2P kit : V102/V102
- ❖ 2-wire Line powered kit : V102-PM + V102-PS
- ❖ 2-wire PoE kit : V102 + V102-PSE
- ❖ 2-wire PoE kit : V102 + V102-PD

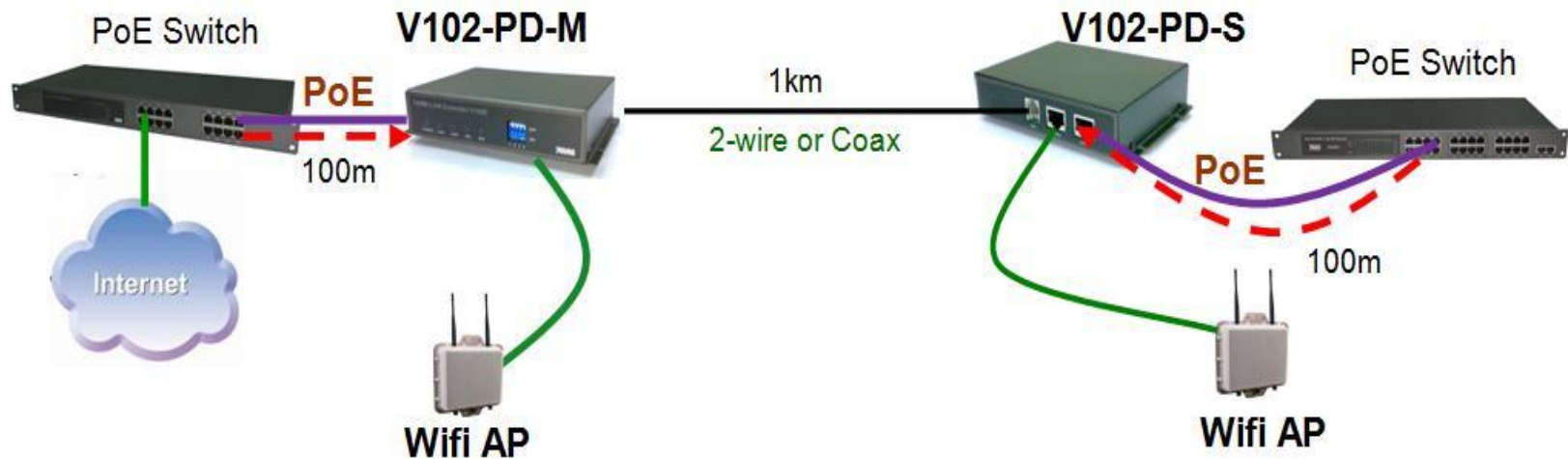


# LAN Extender over 2-wire application



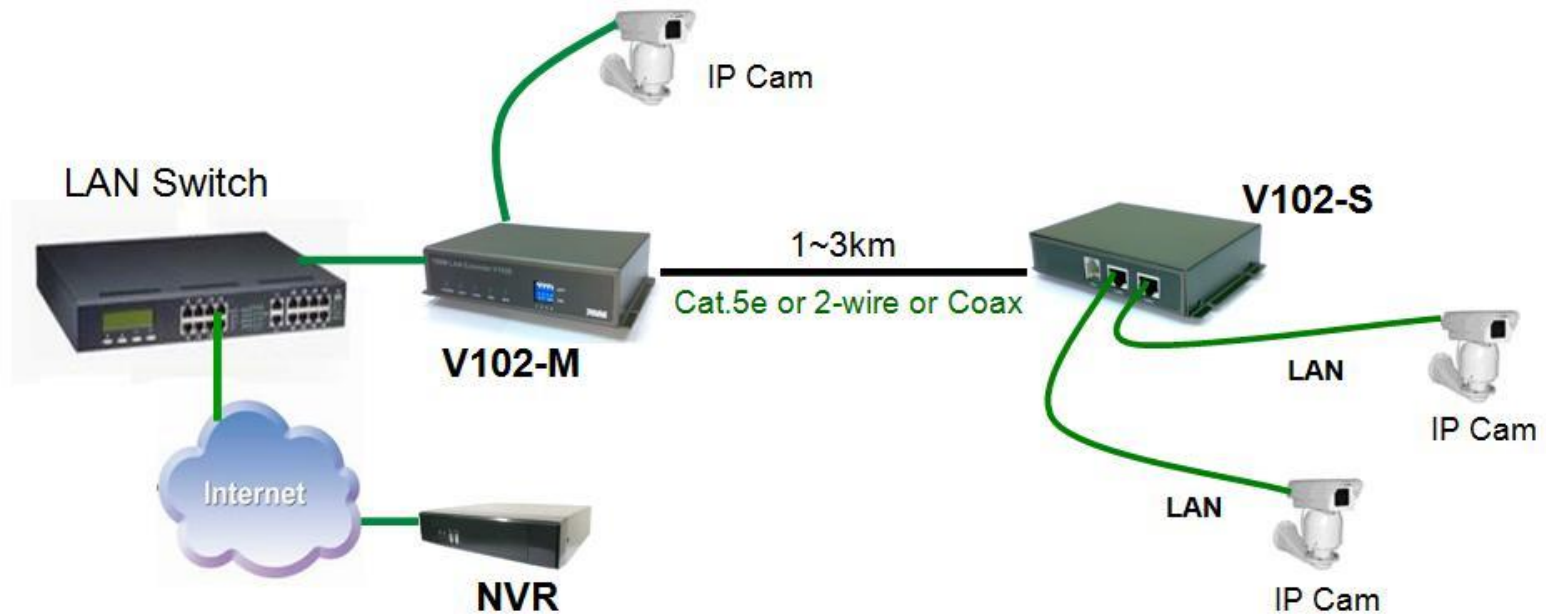
# LAN Extender over 2-wire upto 1km

## ◆ Point to Point (P2P) with PD connection



# LAN Extender over 2-wire

◆ Point to Point (P2P) with 2-wire line powered





# LAN Extender over 2-wire (SHDSL.bis) 3KM

## ◆ SHDSL.bis 5.7M/11M/22M (ATM)

- ❖ 2-wire CO-CPE : AH505A
- ❖ 4/8-wire CO-CPE : AH510C
- ❖ Rack mount model



## ◆ SHDSL.bis 5.7M (TDM)

- ❖ 2-wire CO-CPE : TH505B, H301
- ❖ 4-wire CO-CPE : H302M, H302



# Ethernet over Coax (EoC)

## ◆ VDSL2 30a 100/100M

- ❖ Coax P2P Kit : V102M-BNC (master) + V102M-BNC (slave)
- ❖ Coax PoE Kit : V102M-BNC + V102M-BNC-PD

## ◆ VDSL2 17a 100/60M

- ❖ Coax P2P kit : V102-BNC + V102-BNC
- ❖ Coax LP kit: V102-BNC-PM/PS
- ❖ Coax PoE kit : V102-BNC + V102-BNC-PD





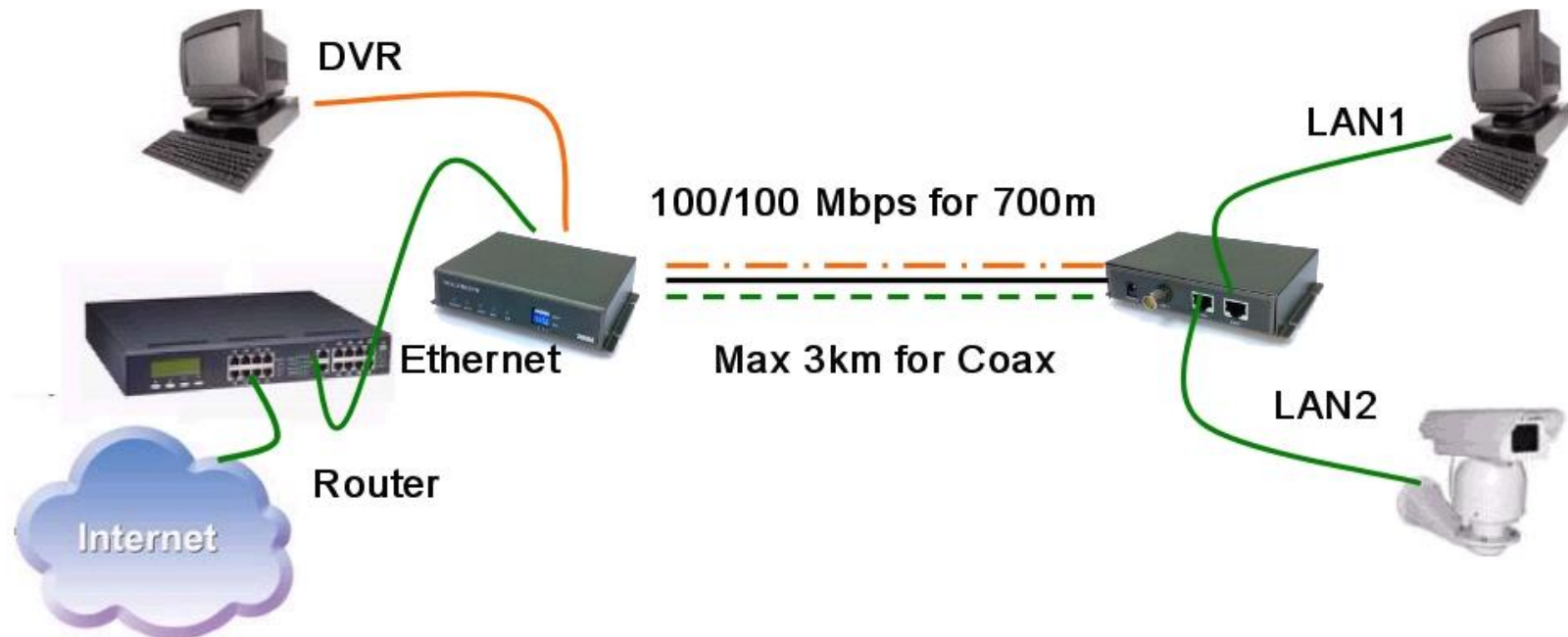
# LAN Extender over Coax

## ◆ Point to Point (P2P)



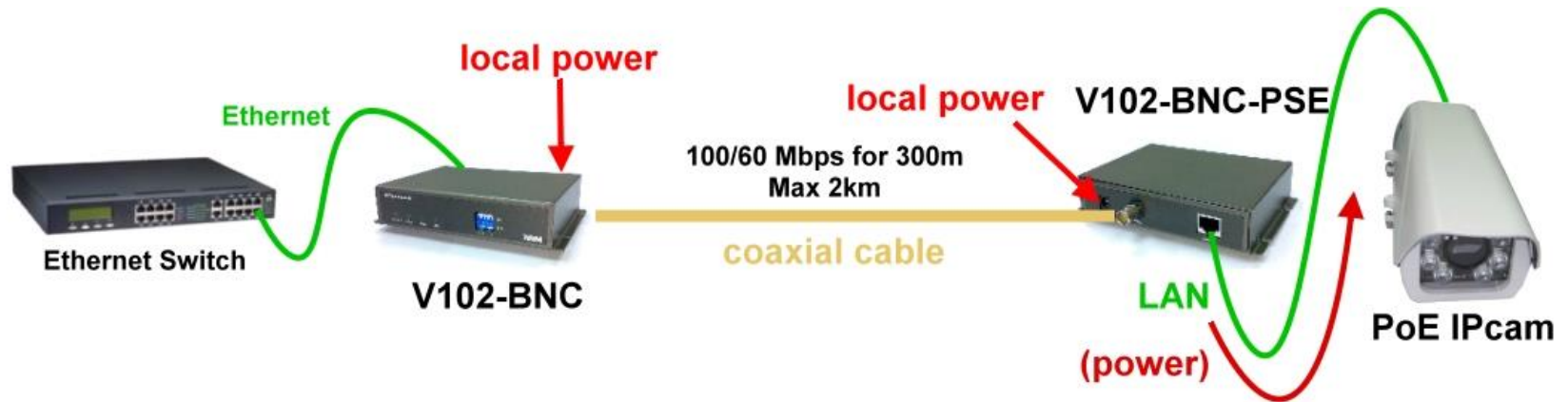
# LAN Extender over Coax

- ◆ Point to Point (P2P) with local power input



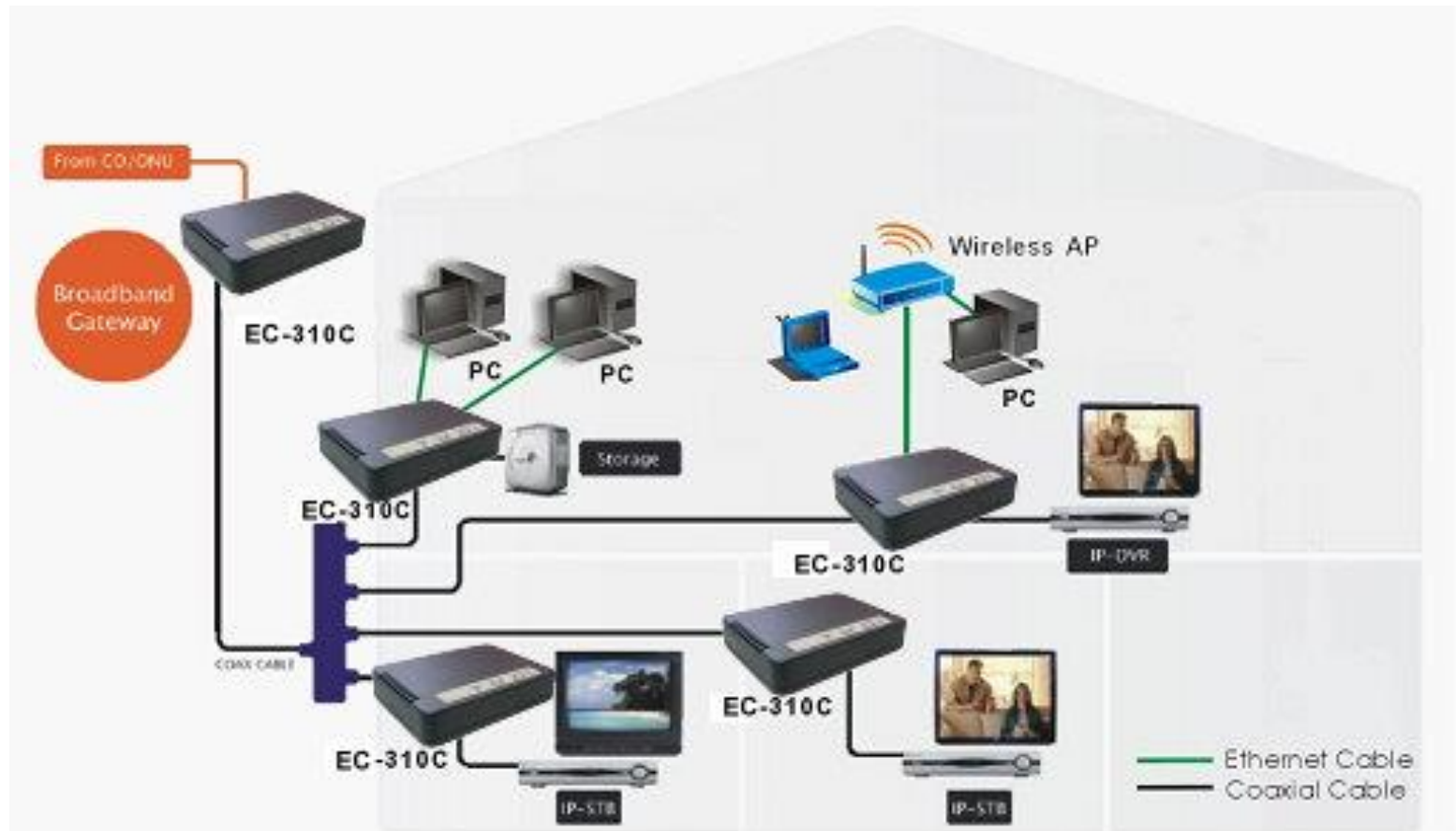
# LAN Extender over Coax

## ◆ Point to Point (P2P) with PoE PSE out



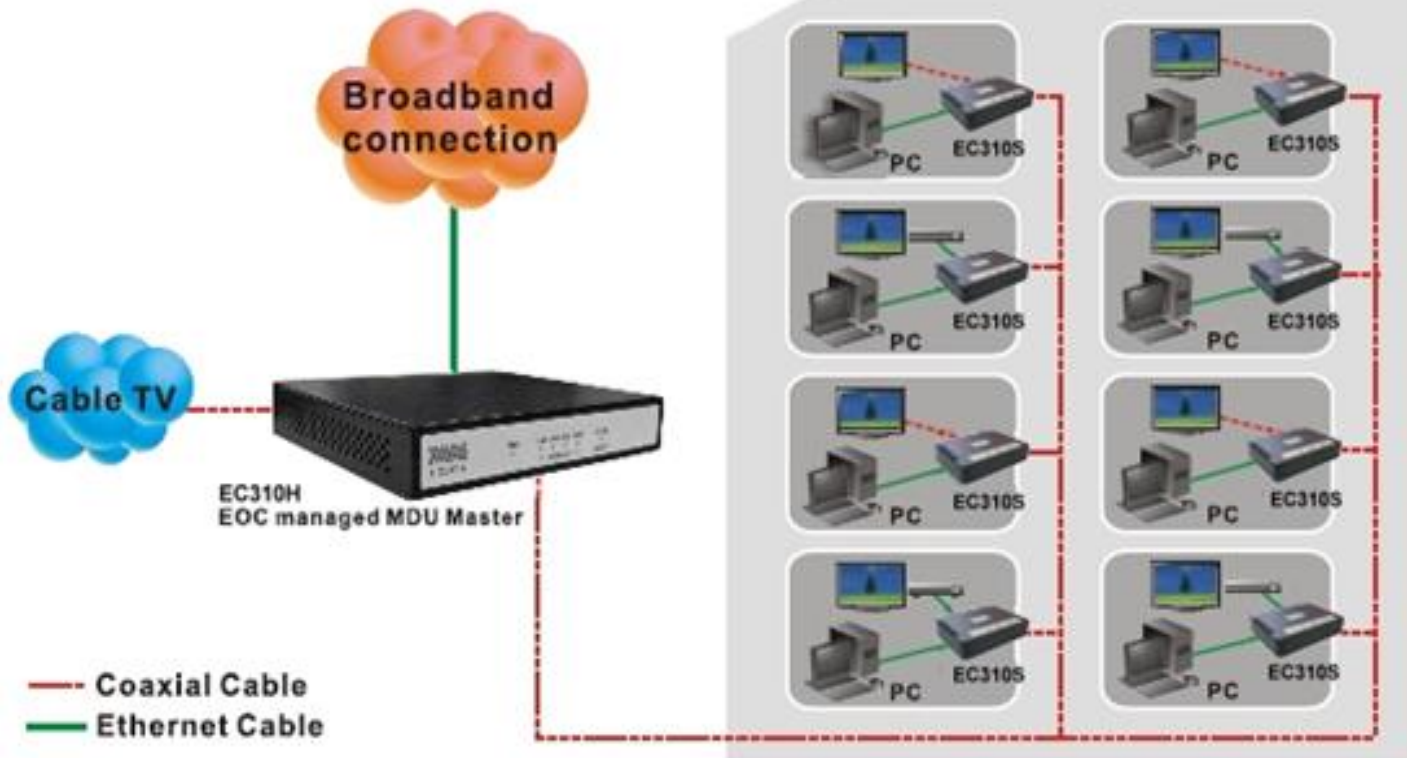
# LAN Extender over Coax

## ◆ Point to Multi-Point (P2MtP) with local power



# LAN Extender over Coax

- ◆ Point to Multi-Point (P2MtP), 61 endpoints



# Fiber Extender upto 80km

- ◆ FE 10/100M and GE 1000M
- ◆ SFP or SC/ST/LC connector
- ◆ Shelf with Dual Power
- ◆ Managed or Un-managed





# Fiber Extender Industrial Grade -20~75C)

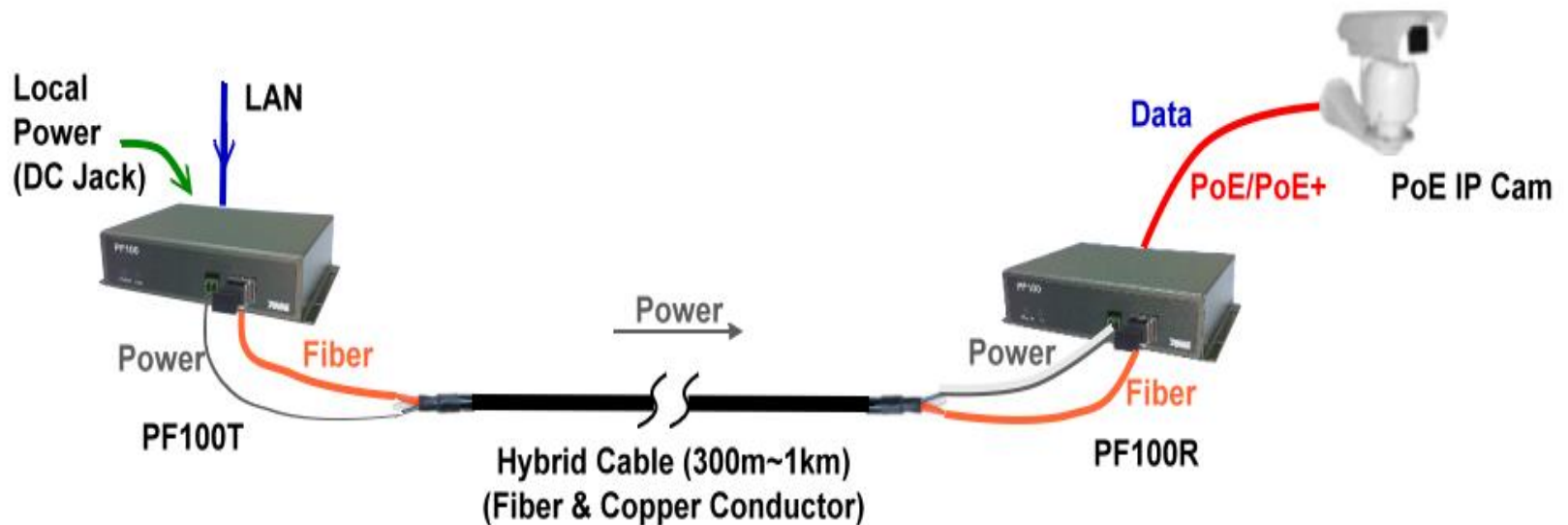
- ◆ FE 10/100M
- ◆ Shelf
- ◆ Un-Managed
- ◆ Industrial Grade
- ◆ MC100T (1p), MC400T (4p)



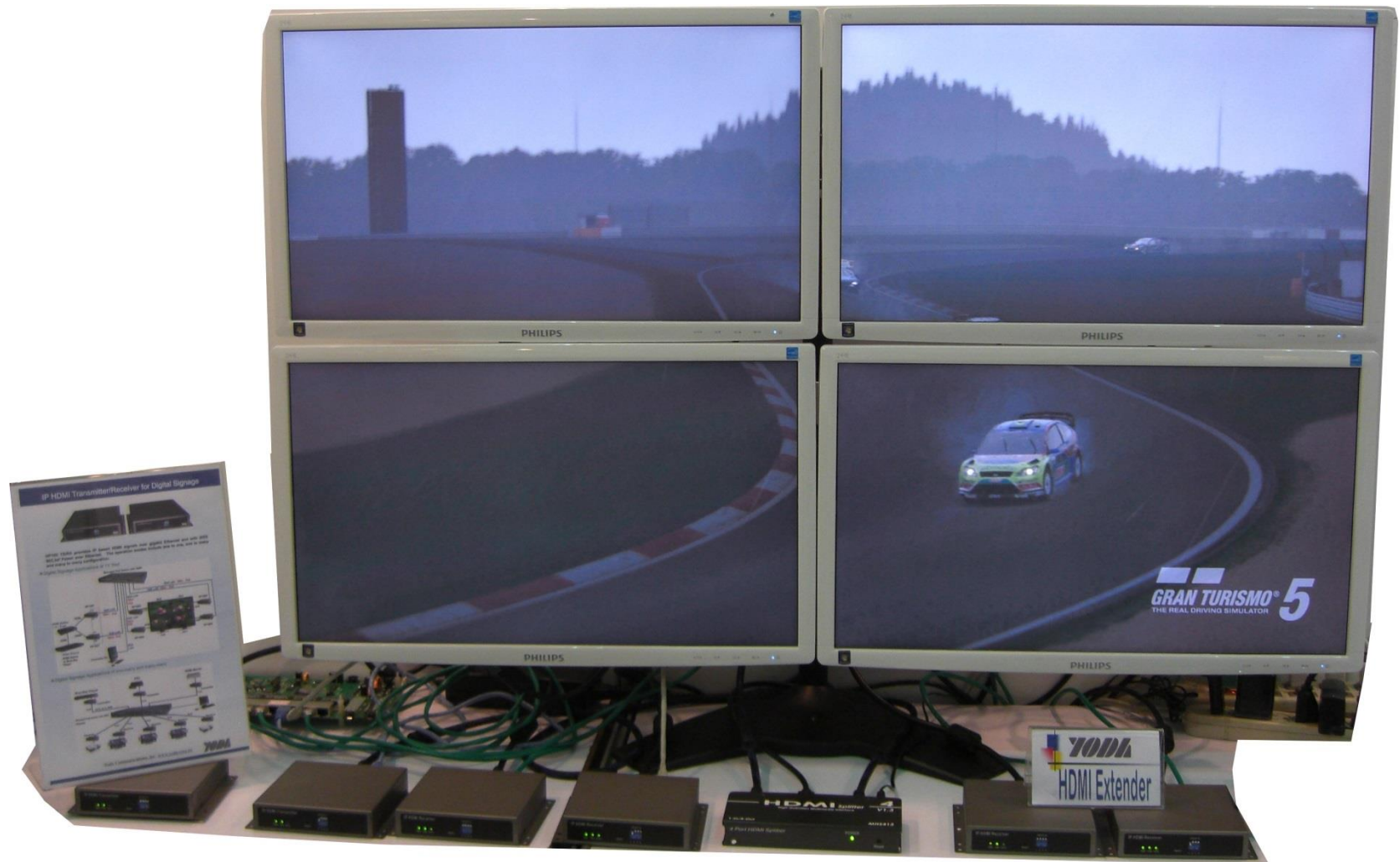
# Fiber/Power Extender 1~2KM

## ◆ FE 10/100M

❖ PF100, PF104 (4p PoE out, 65w)



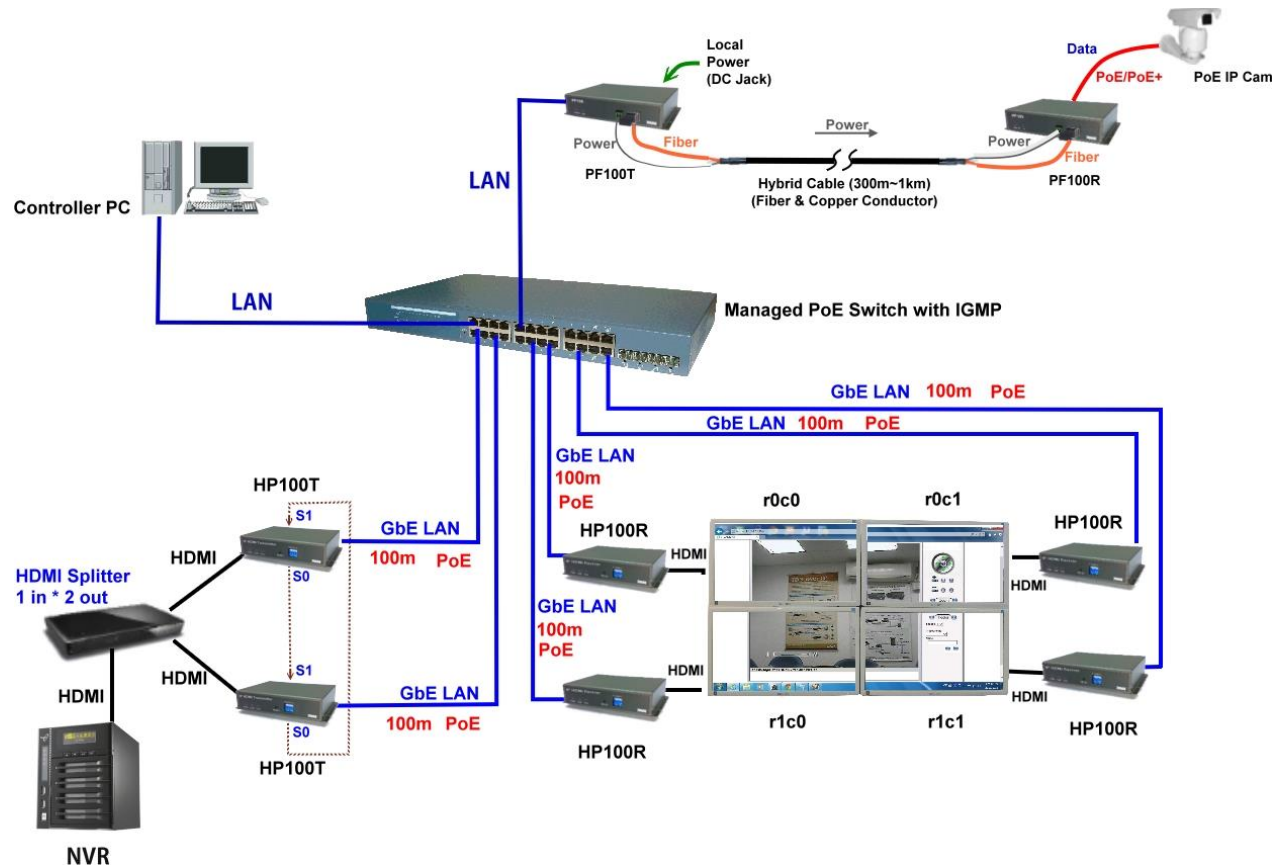
# HDMI over IP (Gigabit) for Digital Signage



## HDMI over IP (Gigabit) for Digital Signage

◆ HP100VP

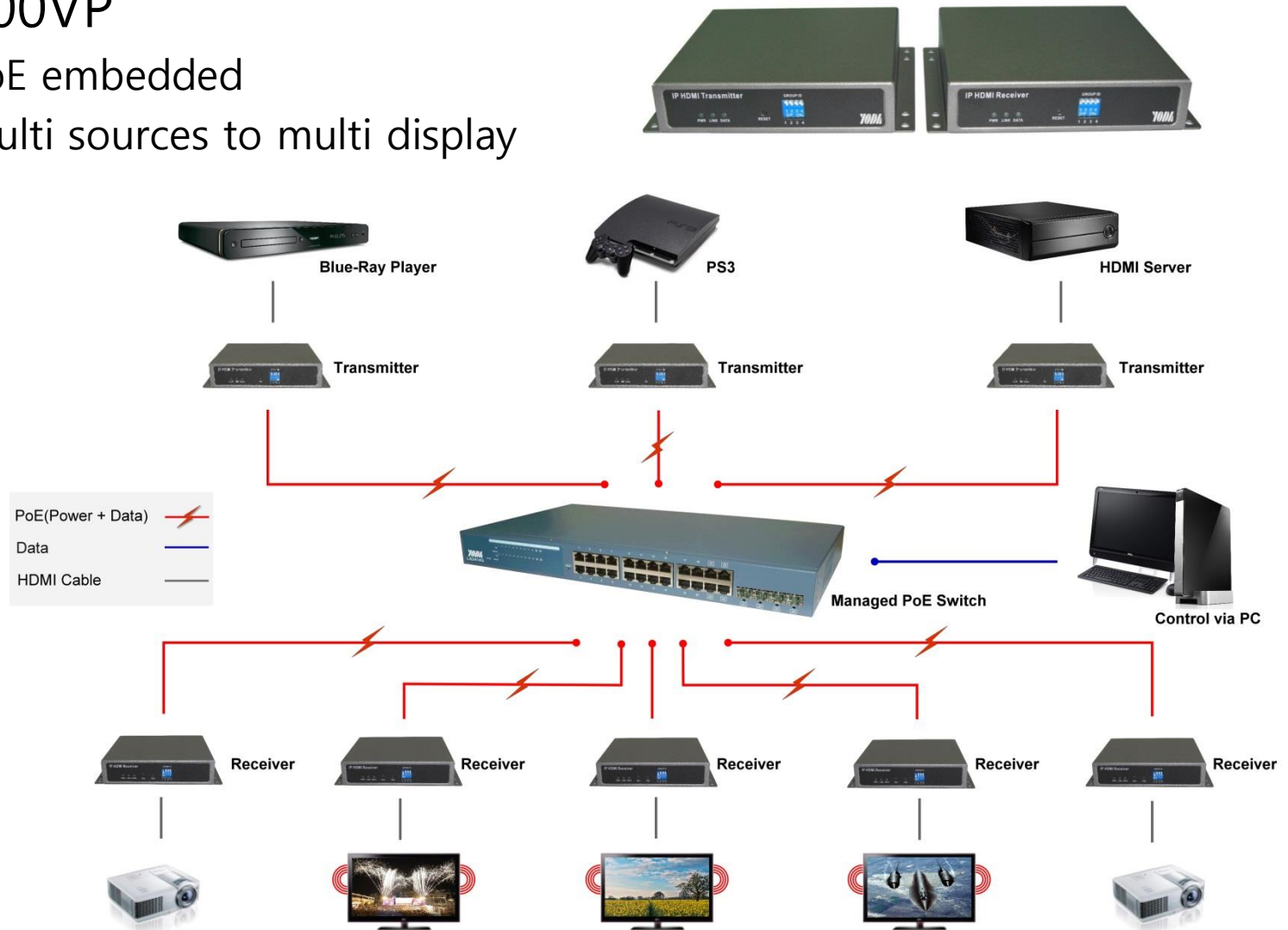
- ❖ PoE embedded
- ❖ Video Wall



# HDMI over IP (Gigabit) for Digital Signage

## ◆ HP100VP

- ❖ PoE embedded
- ❖ Multi sources to multi display





# Managed Gigabit Switch

## ◆ Layer 2 and Websmart model

### ❖ LS2404G vs LS2402G



### ❖ LS1802G vs LS1600G



### ❖ LS1002G vs LS802G





# Industrial Grade Managed Switch

## ◆ Support Hardware Environmental Monitoring

- ❖ DM1802 (16p+ 2p Combo GE)
- ❖ DM1002 (8p+ 2p Combo GE)
- ❖ DM1003C or F (7p+ 3p GE or SFP)
- ❖ DM800 (8p )
- ❖ DM602 (4p+ 2p Combo)

## ◆ Optional Certificates

- ❖ IEC-61850 (power station application)
- ❖ DNV (marine application)
- ❖ EN-50155 (in-vehicles application)
- ❖ UL



# Managed 10G Gigabit Fiber Switch

## ◆ LS2804G

- ❖ 10G SPF+ x 4-port, 24-port Giga Managed Switch

## ◆ LS2424GF

- ❖ 24-port SFP with 4-port Combo
- ❖ Layer 2 managed
- ❖ SFP with varied optic fiber interface
- ❖ Optic fiber connection upto 80km

